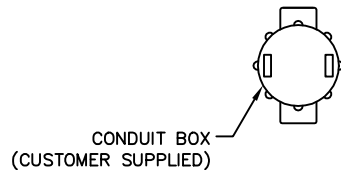
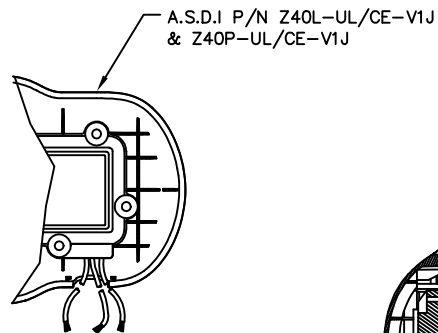
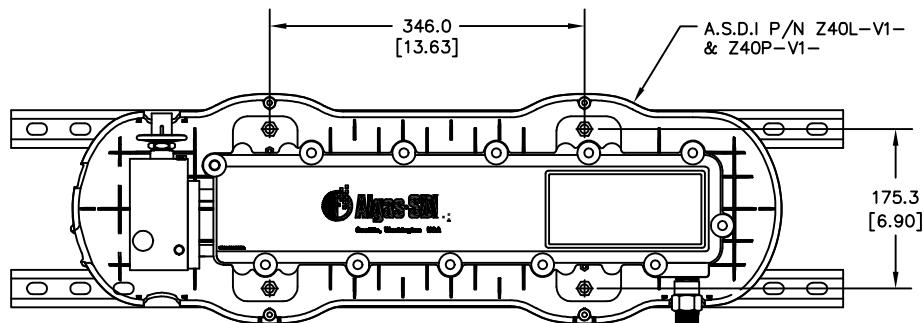
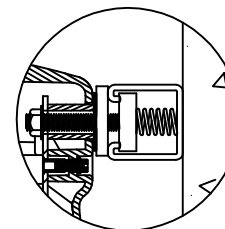
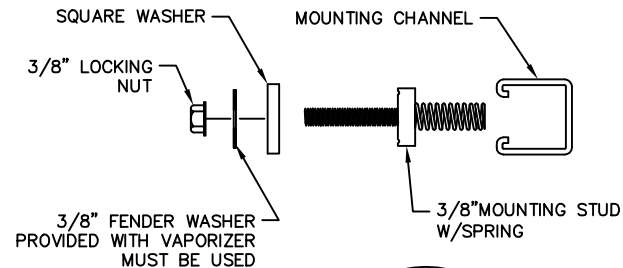


MOUNTING CHANNEL INSTALLATION FOR SOFT (WOOD) WALLS

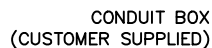
MOUNTING CHANNEL INSTALLATION FOR CONCRETE WALLS

ANCHORING METHODS FOR RECOMMENDED MOUNTING KIT A.S.D.I. PART NO. 80885

REVISIONS		
Rev	Description	Rev. by
A	1) INITIAL RELEASE	7-17-02
B	1) REMOVED ALL PIPING DETAILS 2) REMOVED CONDUIT PART NUMBER KIT	G.L.R. 9-5-02
C	1) ADDED NON WIRE SEAL DETAIL	G.L.R. 9-25-03



3/4" SEAL OFF
(CUSTOMER SUPPLIED)



NOTES

- 1) POSITION VAPORIZER HORIZONTAL ON VERTICAL WALL AS SHOWN. TO MAINTAIN NEMA 3R ENCLOSURE RATING
- 2) ELECTRICAL: 120V/220V/240V VAC, 1PH, 50/60HZ, 3,27/4,68/4,68 KW
- 3) DIMENSIONS SHOWN; MM [INCHES]



Title
ZIMMER ELECTRIC
LP-GAS VAPORIZER
MOUNTING DETAILS

Drawn By G. ROPPE

Date 9-5-02

Des. No.

Checked By

Scale NONE

0901-8002

Approved By

Job No. A.S.D.I. STD.

This drawing is the property of Algas-SDL and is not to be reproduced nor used in any manner detrimental to our interests. All rights are reserved.

Part Number

Size C

Sht. No.

1 of 1

Rev C



Offered By:

Power Equipment Company
2011 Williamsburg Road
Richmond, Virginia 23231

T: 804-236-3800

F: 804-236-3882

www.peconet.com

sales@peconet.com